

# GARDIVALIA

## Festival of Gardens

OPEN GARDENS  
GARDEN EVENTS  
INSPIRING WORKSHOPS

OCTOBER  
2016



[www.gardivalia.com.au](http://www.gardivalia.com.au)

# GARDIVALIA

*Our Vision is:  
To create Gardivalia as the premier garden  
festival in Victoria, to promote tourism & the  
gardens of West Gippsland.*

## KEY TO FACILITIES



Tea & coffee



Open garden



Toilets



Off-street parking



Food



Wheelchair  
accessible garden



Dogs on leads  
welcome



BBSN Food  
Garden

All Gardens are open  
10am to 4pm

**\$20** for five gardens  
per adult

**\$5** single garden  
per adult

## WHERE TO GET TICKETS

- At the garden gate on the day
- Baw Baw Home & Garden Expo 8 & 9 Oct

THANKYOU  
TO MAJOR  
SPONSORS

Warragul & Drouin Gazette  
Neerim District Community Bendigo Bank Branch  
Baw Baw Shire Council

WARRAGUL & DROUIN  
**The Gazette**  
SERVING THE BAW BAW SHIRE & WEST GIPPSLAND



# Welcome

*to the Festival of Gardens*

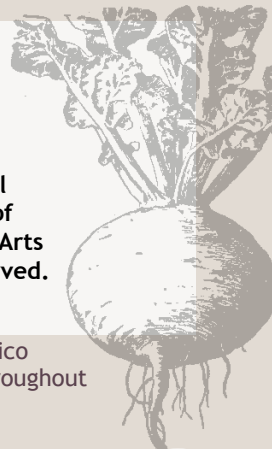
**O**ctober in West Gippsland is Gardivalia month. Our festival features open gardens, food gardens and events. Learn to grow seedlings or visit a farmers' market. Immerse yourself in a creative workshop, reflect at an exhibition or join a tree walk. Enjoy Gardivalia and all that beautiful West Gippsland has to offer.

## GARDIVALIA LAUNCH at Lillico Gardens

**2pm Sunday 2 October**

Official opening by guest speaker, stroll around the gardens, plus the opening of A Floral or Two Exhibition by Warragul Arts Group in the Gallery. Refreshments served. This is a free event.

Lillico Glass Studio, 243 Lillico Road, Lillico  
Exhibition open Wed - Sun 10am-5pm throughout  
October. Phone 5623 1592



## WARRAGUL HIRE & DRIVE

- BUS
- TRUCK
- VAN



Our  
range of buses  
works out to be  
a cost effective  
way to get your  
group to Open  
Gardens

[warragulhiredrive.com.au](http://warragulhiredrive.com.au)

Geoffrey Micah: 0438 692 582

Open Gardens  
by date

● food gardens  
● ornamental gardens

Gardens open midweek  
groups only (8+ people)  
contact garden directly

			SAT 15th	SUN 16th	MON 17th	TUES 18th	WED 19th	THU 20th	FRI 21st	SAT 22nd	SUN 23rd
1	Meander	Icy Creek	●	●	●		●		●	●	●
2	Tall Timbers	Piedmont		●	●	●	●	●	●		●
3	Country Farm Perennials	Nayook	●	●	●	●	●	●	●	●	●
4	Whispering Boulders	Neerim North	●	●						●	●
5	Laurie Collins Sculpture	Jindivick	●	●	●	●	●	●	●	●	●
6	Nyumba Yaffe	Jindivick				●	●			●	●
7	Monkey Gully	Neerim Sth								●	●
8	Citriadora	Crossover	●	●	●	●	●	●	●	●	●
9	Jex & Jessie's Garden	Buln Buln			●	●	●	●	●		●
10	Wombat Hollow	Lillico								●	●
11	Lillico Gardens	Lillico	●	●			●	●	●	●	●
12	Lillico Siding	Lillico			●	●	●	●	●	●	●
13	Darley Grange	Nilma North	●	●			●			●	●
14	Tranquility	Warragul		●	●	●	●	●	●		●
15	Eastern Park Community	Warragul		●		●	●	●			●
16	Dawn's Garden	Warragul		●							●
17	Tessa's Garden	Warragul								●	
18	Coromandel Arboretum	Warragul					●	●	●	●	●
19	Wild Dog Boardwalk	Warragul	●	●	●	●	●	●	●	●	●
20	Nilma PS Kitchen Garden	Nilma			●	●	●	●	●		●
21	Gumview	Darnum	●	●			●			●	●
22	Witham	Yarragon	●	●	●	●	●	●	●		
23	REstore	Yarragon			●	●	●	●	●	●	●
24	Allambee Gardens	Allambee									●
25	Eurabbie	Yarragon Sth	●	●	●	●	●	●			
26	Around the Mulberry Tree	Trafalgar								●	●
27	Kurinda Rose Garden	Warragul	●	●		●	●	●	●	●	●
28	Tennessee	Lardner	●	●						●	●
29	Janet's Garden	Drouin			●	●				●	●
30	Eloura	Drouin								●	●
31	Peppermint Ridge	Tynong								●	●



## 1 Meander

1875 Mount Baw Baw Tourist Road

Icy Creek

Jo and Tony

Phone: 5621 0106

Open Sat/Sun 15 &amp; 16, 22 &amp; 23

Midweek groups 8+: Mon 17, Wed 19  
& Fri 21

This developing garden rambles over seven acres. Rare trees and shrubs, rockery and ponds feature against a backdrop of mountains. From Noojee drive 13km towards Mt Baw Baw. Garden is 1km on left from the Icy Creek phone box.



## 2 Tall Timbers

3560 Yarra Junction-Noojee Road

Piedmont

Olwyn and Manfred

Phone: 5628 9559

Open Sun 16 &amp; 23

Midweek groups 8+: Mon 17 - Fri 21



A garden in a natural bush setting with additional plantings of many exotic trees and shrubs around water features such as a creek, cascade and ponds. Sale of jams and musical performance. Located on Main Yarra Junction-Noojee Road C425 between Nayook turn-off and Main Neerim Rd C425/C426.



## BBSN Food Gardens

These are the gardens marked with the Baw Baw Sustainability Network logo. Vegetables, fruit & nuts, berries, chickens, bees and much more are produced in these gardens. You can learn about composting and propagating. Many follow permaculture principles. These gardeners love to grow their own food and have local experience and ideas to share. [www.bbsn.org.au](http://www.bbsn.org.au)

*food gardens  
can be  
messy!*



### 3 Country Farm Perennials

96 Laings Road  
Nayook

David and Merryle  
Phone: 5628 4202

Open Sat/Sun 15 & 16, 22 & 23

Open Midweek: Mon 17 - Fri 21

Free entry



A large country garden set in 2.5 acres featuring an outstanding collection of perennial flowers. Nursery specialising in dry hardy perennials and newly imported plants. From M1 take Neerim Sth/Drouin exit. Follow signs to Neerim Sth continue 10km to Neerim Junction, turn left and travel 2.5km to Nayook.

### 4 Whispering Boulders

105 Old Fumina Road,  
Neerim North

David & Mariola

Phone: 0413 992 550

Open Sat/Sun 15 & 16, 22 & 23



Enjoy our glorious views, forest tracks, sweeping lawns, native plants, fruit trees, ornamental ponds, sculptures, fun and more set on 3 acres. Turn left into Neerim Nth Rd just past Neerim Junction heading north. After 4km turn left onto Old Fumina Road, we're 1km on the north side.

### 5 Laurie Collins Sculpture Garden

420 Main Jindivick Road,  
Jindivick

Marian and Laurie

Phone: 5628 5224

Open Sat/Sun 15 & 16, 22 & 23

Open Midweek: Mon 17 - Fri 21

Donation only



Metal sculptures spread throughout an acre of trees, shrubs and roses. Browse Nicole Smith's exhibition in the Red Tree Gallery. Look for the fence with the dragons, fairies and the F.J. Holden. From Main Neerim Road take Main Jindivick Road.

## COUNTRY FARM PERENNIALS

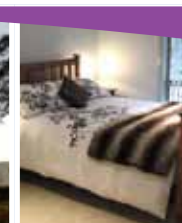
### GARDEN & NURSERY OPEN

*Vast range of dry hardy & shade loving perennials for those difficult garden spots.*

*We also present quality tours to private gardens in Europe, England & Americas.*

**GARDEN OPEN - PLANT SALE**  
**Sat 15<sup>th</sup> Oct till Wed 2<sup>nd</sup> Nov 2016**  
**10am - 4pm FREE ENTRY**  
**96 Laings Rd, Nayook 3832**

Ph/Fax; 03 5628 4202 Email; cfp@dcsi.net.au  
Plant Catalogue; [www.countryfarmperennials.com.au](http://www.countryfarmperennials.com.au)



Email: [redparrot47@gmail.com](mailto:redparrot47@gmail.com)

[parrotsnesthideaway](https://www.facebook.com/parrotsnesthideaway)

0409 484 570





## 6 Nyumba Yaffe

1006 Jacksons Track  
Jindivick

Rosalie and Philip  
Phone: 0466 014 251

Open Sat/Sun 22 & 23

Midweek groups 8+: Wed 19 - Thu 20



Cottage garden with over 200 roses, enclosed orchard and sixty or more clematises and many other garden species. Also leadlight display. From Jindi Store travel 0.5km west on Jacksons Track, to opposite North Jindivick Road. Park at the bottom entrance.

## 7 Monkey Gully

700 McDougal Road  
Neerim South

Helen and Mark

Phone: 5626 6468

Open Sat/Sun 22 & 23



Unique setting adjoining state forest. Features views, vegetable garden, chickens, orchard, with various fruiting plants using permaculture principles, and espalier. WGRLC will host a gardening-themed pop-up library. From M1 take Nilma exit onto Bloomfield Rd. Right at Old Sale Rd. Next left into Mizpah Settlement Rd. This runs into McDougal Rd. Travel 6.7km.

## 8 Citridora

711 Old Telegraph Road East,  
Crossover

Noeleen

Phone: 0418 553 304

Open Sat/Sun 15 & 16, 22 & 23

Midweek groups 8+: Mon 17 - Fri 21



Rambling Edna Walling style three acre garden surrounding period style homestead, features bulbs, irises, trees, fountain and mountain views. Flower arranging demonstration on Sunday 16 at 11am. From M1 freeway take Nilma exit and travel 13km north on Bloomfield Rd, turn right into Old Telegraph Road East, 2.9 km on left.

## 9 Jex & Jessie's Garden

64 Platts Road,  
Buln Buln

Phone: 5626 7045

Open Sun 23

Midweek groups 8+: Mon 17 - Fri 21



Well planned and productive one acre has kitchen garden, small scale market garden and native beds using permaculture principles. Fruit trees, chookhouse masterpiece, compost system, bees and glasshouse provide ample food for the household with excess sold at the farm gate. At Nilma turn onto Bloomfield Rd, travel 8.7km. Turn left onto Old Sale Rd for 2.2 km Turn right onto Platts Road.



*Gippsland Travel prides itself on offering professional and friendly service for all your travel requirements.*

"WHERE  
EXPERIENCE &  
EXPERTISE  
COUNTS"

Shop 3/126 Albert Rd, Warragul, Victoria  
**Ph 5623 5151** info@gippslandtravel.com.au  
**www.gippslandtravel.com.au**



# blerick tree farm

www.dialatree.com.au

Quality trees direct from the grower  
Over 3000 advanced trees | Delivery and Planting Service  
Garden Design using latest visualisation software

**55 McDougal Road, Neerim South 3831**  
**Ph: 03 5628 1507 M: 0417 535 917**  
**E: admin@blerick.com.au**

Present this ad to receive  
**10% DISCOUNT**  
Applies weekends 15/16 &  
22/23 October 2016  
Excludes already  
discounted stock



## 10 Wombat Hollow

60 Roberts Road,  
Lillico

Sue

Phone: 0403 063 426

Open Sat 22 & Sun 23



Three acres of garden based around 30 year old trees. Garden rooms with themes. Wombat Hollow continues to grow and develop. Leaving Warragul heading north on Brandy Creek Road turn right into Lillico Road. After 1.5km turn left onto Christies Road. Take first left onto Roberts Road. Wombat Hollow is 2km on the right.

## 11 Lillico Gardens

243 Lillico Road,  
Lillico

Cathy & Haydn

Phone: 5623 1592

Open Sat/Sun 15 & 16, 22 & 23

Midweek groups 8+: Wed 19 - Fri 21



Beautiful features of this rambling garden include a century old pear tree, archways, rose arbour, dry creek bed, pond and an eclectic mix of plants, trees and zany garden ornaments. From Brandy Creek Road travel 2.5km down Lillico Road.

## 12 Lillico Siding

234 Lillico Road,  
Lillico

Jenny

Phone: 0419 317 591

Open Sat/Sun 22 & 23

Midweek groups 8+: Mon 17- Fri 21



Roses abound throughout the cottage style plantings at Lillico Siding, which is an evolving eight year old garden featuring a rose arbour walk leading to a pretty fountain and pond. Historically this property was the site of the Lillico Railway siding and remnants are still visible. From Brandy Creek Road travel 2.5km down Lillico Road.

## 13 Darley Grange

701 Bloomfield Road  
Nilma North

Joyce

Phone: 5626 8237

Open Sat/Sun 15 & 16, 22 & 23

Midweek groups 8+: Wed 21



Joyce has been maintaining this garden for almost 40 years. The front garden features a very old and large Irish strawberry tree. From the M1 travel 7km north on Bloomfield Rd. Darley Grange is on the left after the electricity high tension line.

## Lillico glass studio

a unique experience...

Gallery - unique glass art, jewellery...  
Produce Store, morning & afternoon teas,  
Groups welcome, garden tours  
Open Wed- Sun 10am-5pm  
Phone 5623 1592  
[www.lillicoglassstudio.com.au](http://www.lillicoglassstudio.com.au)



## WARRAGUL SELF-CONTAINED 2 & 3 BEDROOM COTTAGES



[camelliacottage.info](http://camelliacottage.info)  
[valleyviewcottage.info](http://valleyviewcottage.info)

Call Suellen  
0418 882 804

*Camellia Cottage & Valley View Cottage*

TWO CENTRAL LOCATIONS TO VISIT THE GARDENS OF THE REGION



### 14 Tranquillity

53 Princess Street,  
Warragul

Jean

Phone: 5622 1547

Open Sun 16 & 23,

Midweek groups 8+: Mon 17 & Fri 21



Immaculate garden with a large variety of flowers & shrubs, water feature and ornamental fernery. Garden sculpture and furniture by artist Ryan Parsons. Ryan will be talking to visitors at 11am & 2pm on his ideas and how he makes the sculptures. Travel up Normanby Street to the last turn on the left before Stoddart's Road. Follow signs.



### 15 Eastern Park Community Garden Warragul

Enter from carpark off Cambridge

Drive, Warragul

Donna 0407 873 681

Open Sun 16 & Sun 23

Midweek groups 8+: Tues 18 - Thurs 20



A half acre sustainable and organic garden built by volunteers two years ago. This garden brings many schools, groups together to learn new skills, share knowledge, grow, harvest, prepare and share in fresh fruit and vegetables and experience the joy of growing your own. From Normandy Street, follow signs.



### 16 Dawn's garden

2/26 Witton Street,

Warragul

Phone: 0409 192 802

Open Sun 16 & 23



An excellent example of a small manageable garden if you are thinking of downsizing. This compact three-sided garden fits around a town unit and still manages to catch the sun. From M1 take the main shopping centre exit over the railway line, Victoria St, left at Alfred Street, left into Witton St. Parking at the back of the Warragul Library off Trumpy Lane.



### 17 Tessa's Garden

7 Brooks Court,

Warragul

Phone: 5622 0453

Open Sat 22



An informal food garden for wildlife and humans containing vegetables, fruit trees, chooks, natives and more. From the large roundabout south of the freeway near the hospital, turn up Bona Vista Road, take first left onto Rulemont Rd, second right into Cason Cres, then third right into Brooks Court.



STRING  
+ SALT  
GROW | COOK | SHARE

*cooking school*

[www.stringandsalt.com.au](http://www.stringandsalt.com.au)

42 Smith Street, Warragul | 03 5622 2119



Visit a unique garden **full of inspiration  
& tranquility**



garden tours  
art groups  
wedding photos

[info@countrygardentours.com.au](mailto:info@countrygardentours.com.au)  
[www.countrygardentours.com.au](http://www.countrygardentours.com.au)

PHONE 0417 034 300





## 18 Coromandel Arboretum

426 East West Road,  
Warragul  
Jan  
Phone 0408 318 429  
Open Sat/Sun 22 & 23  
Open Midweek: Wed 19 - Fri 21



Edible forest garden and sustainable food forest on 5 acres. Largest Australian oak collection, ancient eucalypts, labyrinth and peace pole, tours at 11am & 3pm. See events section for extra happenings. From Warragul-Korumburra Road roundabout travel 1.7km towards Korumburra, turn left into East West Rd

## 19 Wild Dog Winery Boardwalk

Warragul-Korumburra Road  
Warragul  
Gary and Judy  
Phone: 5623 2211  
Open Sat/Sun 15 & 16, and 22 & 23  
Open midweek: Mon 17 - Fri 21  
Donation only



A unique natural fern lined boardwalk as part of a wetlands trail. View vineyards, olive grove and bush tucker garden. Collect brochure and maps from the cellar door. Produce for sale. Restaurant and café. Winery is 3km south of Warragul-Korumburra Rd roundabout.

## 20 Nilma Primary School Kitchen Garden

76 Bloomfield Road  
Nilma  
Phone: 0447 557 216  
Open Sun 23  
Midweek groups 8+: Mon 17 - Fri 21



Created by students this garden provides seasonal produce for their cooking classes. They harvest, prepare and share the food as part of the inspiring Stephanie Alexander Kitchen Garden Program. The garden boasts compost, chooks, worm farm, fruit trees and herbs. Take Nilma exit off M1. Turn right into Bloomfield Rd.

## 21 Gumview

43 Gaul Avenue,  
Darnum  
Irene  
Phone: 5627 8310  
Open Sat/Sun 15 & 16, and 22 & 23  
Midweek groups 8+: Wed 19

This garden has over sixty different peonies with many magnolias, maples camellias and hellebores. Flowering bulbs including galanthus, cyclamen hederifolium planted over large areas. Large clivia collection. After coming off M1 continue down main street towards and past hotel. Turn left into Gaul Ave.



## Gardivalia Raffle

RAFFLE  
TICKETS  
\$2  
at gardens

### 1ST PRIZE

Wheelbarrow & garden goodies valued at \$500 sponsored by Neerim South Hardware & Garden Supplies

### 2ND PRIZE

Country Farm Perennials plants or put towards a Garden Holiday Tour to the value of \$250

### 3RD PRIZE

Raglan B&B accommodation to the value of \$210

### 4TH PRIZE

Kurinda Rose Nursery plants to the value of \$100

### 5TH PRIZE

Outpost Retreat dinner for 2 valued at \$60

DRAWN 14 NOV at Warragul Gazette

WIN

## BOUTIQUE SELF CATERING ACCOMMODATION

[www.lantilly.com](http://www.lantilly.com)

The perfect base to explore the gardens of West Gippsland

*Lantilly House*

3 Toorak Avenue, Warragul. Contact Kevin on 0411 772 176







Some open gardens offer toilet facilities. Public Toilets can be found in:

- Warragul
- Drouin
- Neerim South
- Noojee
- Yarragon
- Trafalgar
- Jindivick



# Gardivalia 2016

MAP OF OPEN GARDENS  
For detailed directions to individual gardens please refer to the numbered garden entry.

KEY TO SYMBOLS





**22 Witham Garden**  
2 Hazeldean Road  
Yarragon  
Elizabeth  
Phone: 0428 342 330  
Open Sat/Sun 15 & 16  
Midweek groups 8+: Mon 17 - Fri 21

Established town garden with mature trees and garden beds with some quirky features. Turn off M1 into Hazeldean Road in Yarragon, second house with large peppermint gum on nature strip.

**23 REstore**  
**Permaculture Garden**  
79 Princes Highway,  
Yarragon  
Phone: 0428 422 461  
www.bbsn.org.au  
Open Sat/Sun 22 & 23  
Open Midweek: Mon 17 - Fri 21



This four year old community garden has a wide variety of edible plants, chickens and worm farms, compost and aquaponic system. Plants for sale. REstore is at the east end of the Yarragon shops. Look for the lovely multi-coloured picket fence and Fozigobbles Café.



**24 Allambee Gardens**  
981 Leongatha-Yarragon Road,  
Allambee  
Valentina & Stephen  
Phone: 5634 4222  
Open Sun 23



Large country garden with great views. Over thirty raised veggie beds with new orchard. Tank water used as well as some permaculture principles. Vines and chooks, beds with maple tree shade; plants for sale. On M1 from Warragul, turn right at the lights onto Rollo St, turn left at the church onto Campbell St, this becomes Leongatha -Yarragon Rd. Head up the hill for 10kms.



**25 Eurabbie**  
52 Earls Road,  
Yarragon South  
Wendy  
Phone: 0428 422 461  
Open Sat/Sun 15 & 16  
Midweek groups 8+: Mon 17 - Thur 20



Spacious garden with a view to the Baw Baws. Organic vegetable garden based on permaculture principles with mature trees, shrubs and flowers. Plants for sale. From Warragul on Princes Highway turn right at Roberts Rd. Turn left into Yarragon South Road. After 5km turn left into Earls Road.



**"Consistently  
outstanding meals"**

**OPEN 7 DAYS**  
FOR LUNCH & DINNER  
03 5634 2202  
105 PRINCES HWY YARRAGON  
www.yarragonhotel.com.au



**Geoff's Mowers**  
for quality garden needs  
BRUSHCUTTERS • HEDGETRIMMERS  
BLOWERS • MOWERS • CHAINSAWS  
GARDEN TOOLS & RIDE ONS  
come and see  
Geoff & Judy



**83 Burke St, Warragul**  
**geoffsmowers.com.au 5623 4931**



## 26 Around the Mulberry Tree

Rear of 51 Princes Highway,  
Trafalgar

Maree & Geoff

Phone: 0429 148 208

Open Sat/Sun 22 & 23



New food garden set amid established trees. Sustainable management practices including vegetable wicking beds, fruit trees (inc espaliers) berry house, chooks, shiitake mushrooms, composting, worm farm and greenhouse. Next to Shell Service Station. Entry to garden from Lady Hamilton Lane at rear of house. Parking at Foodworks Supermarket.

## 27 Kurinda Rose Garden

404 Warragul-Lardner Road  
Warragul

Stan and Marjolijn

Phone: 0435 651 543

Open Sat/Sun 15 & 16, 22 & 23

Open midweek: Tues 18 - Fri 21

Donation only



Country garden featuring hundreds of roses with ornamental trees, shrubs and vegetable garden. Also rose nursery and garden gift shop. Turn into Lardners Track from Princes Highway over rail crossing. Travel 4 km. Turn left into Warragul-Lardner Road.

## 28 Tennessee

1445 Lardners Track  
Lardner

Michael & Kristie

Phone: 0434 797 858

Open Sat/Sun 15 & 16, 22 & 23



A verdant and fruitful 109 acre dairy, sheep and rare breed chicken farm. Rustic vegetable beds and elegant blooms. Children's adventure garden, established ornamentals. Pruning workshops both Saturdays 2pm. Farm sourced produce and baby animals. From M1 freeway take Lardner Park/Warragul exit. At Lardners track traffic lights turn right over rail line, travel 10km.

## 29 Janet's Garden

12 Railway Ave  
Drouin

Phone: 0418 599 965

Open Sat/Sun 22 & 23

Midweek groups 8+: Tues 18 & Wed 19



Front garden full of herbs and fruit trees for the birds, insects and reptiles. Permaculture principles are used in the back yard for the vegetables, fruit trees, chooks and a rambling relaxed flower garden. From Princes Hwy turn at the Police Station into The Viaduct. Turn left into Railway Avenue immediately after the railway bridge.

## Kurinda Rose Nursery

- GROWERS OF QUALITY 2 YEAR ROSE PLANTS
- POTTED ROSES AND GARDEN GIFT SHOP

404 Warragul-Lardner Rd, Warragul  
(Corner Lardners Track)

Open Tuesday-Friday 9am-5pm  
& most weekends  
Phone 5623 6827



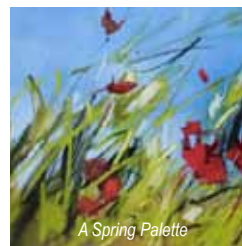
Baw Baw  
best enjoyed on weekends

Rokeby Market

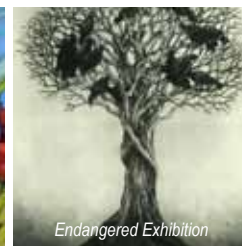


[www.visitbawbaw.com.au](http://www.visitbawbaw.com.au)





A Spring Palette



Endangered Exhibition



Terracotta Dragon

## 30 Eloura

76 Church Street

Drouin

Colleen

Phone: 0419 329 983

Open Sat/Sun 22 & 23



Town block with multi function informal outdoor areas providing spaces to grow vegetables, flowers and fruit, play and relax. From Princes Hwy turn at the Police Station into the viaduct. Travel under the railway bridge, turn left onto Church St at T intersection.



## 31 Peppermint Ridge Farm

Australian Native Food Garden

540 Tynong North Road,

Tynong North

Julie & Anthony

Phone: 5942 8580

Open Sat/Sun 22 & 23



Our garden showcases over thirty Australian native food plants as part of an established kitchen garden. Their unique flavours will feature in the refreshments available in our café. Plant stall, morning/afternoon tea and lunch. From the M1 freeway take the Tynong North Road and travel 5.4km. Farm is on the right, signpost at gate.

## A Spring Palette

1 - 31 October

Daily 10:00am - 5:00pm

Town & Country Gallery

111 Princes Highway,

Yarragon

As you meander the trail of beautiful open-gardens, take some time to enjoy our ever-changing exhibition of enchanting artworks capturing the colour, contrasts and drama of the magnificent gardens of Gippsland. Featuring quality contemporary paintings by local artists in a diverse range of media.  
townandcountrygallery.com.au

## Trafalgar Arts Market

Sat 1 Oct

9:00 - 1:00pm

Trafalgar Railway Station

Wendy 0407 710 180

free event

Handmade artisan goods: pottery, beads, original paintings and textiles.

## Endangered Exhibition

1 Oct - 6 Nov

The Serigraph Gallery

157 Main Road,

Neerim South

Phone: 5628 1519

Open Weekends

10:00am-5:00pm

Free entry

Sensitivity to our natural world and conserving its many innate beautys is explored using different mediums by invited artists. Also open by appointment. serigraphgallery.com

## Miniature Fairy Garden

Sat 1 October

1:00 - 3:00pm

Trafalgar Railway Station

Cost: \$10

Bookings required:

Prue 0417 500 244

Create a garden with a fairy house, path and surrounding forest to entice fairies to visit.

## A Floral or Two Exhibition

2-30 Oct

Lillico Glass Studio

243 Lillico Road, Lillico

Phone: 5623 1592

Open Wed-Sun

10:00am-5:00pm

Free entry

Warragul Art Group has many gardeners in its midst. Over summer they visit each others gardens and paint a collection of colourful art works full of light and shade. Official opening 2pm Sun 2 at the Gardivalia launch.

## Terracotta Dragon & Gargoyle sculpting

Sun 2 October

Time: 10:00am - 3:00pm

64 Platts Road

Cost: \$120

Bookings: Jessie 5626 7045

Create a whimsical dragon or gargoyle for your garden, brickwall or entrance. All materials, tools and firing provided.

# Town & Country Gallery

OPEN DAILY 10-5

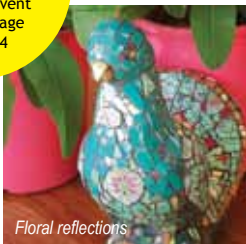
YARRAGON

Princes Hwy, Yarragon 03-5634 2229

www.townandcountrygallery.com.au

celebrating art...





Floral reflections



Linocut Workshop



Origami Flowers



A Floral or two



Tree Walks of Drouin

## Baw Baw Shire Council Seniors Walk

Tues 4 October,  
9:00am - 2:30pm  
Noojee  
Bookings essential:  
5624 2456 limited spaces  
Free guided walk for  
active seniors on tracks  
around Noojee and  
the Noojee heritage  
centre. Bus pickups from  
Warragul, Drouin only, no  
self drive. Morning tea &  
light lunch included.

## Floral Reflections

Sun 9 October  
10:00am - 4:00pm  
Trafalgar Railway Station  
Cost: \$85 incl materials  
Bookings: Alene Bonser  
Phone 0427 402 117  
Learn to mosaic with  
glass, learning new  
techniques or refreshing  
old ones. Everything  
supplied to create a  
beautiful mosaic.

## Garden World

5-30 October  
The Station Gallery  
Yarragon Railway Station  
Open Wed-Sun  
Times: 10:30am - 4:00pm  
Enter the world of the  
artists garden and explore  
the exciting variety of  
plants, animals and insect  
life existing in a garden  
setting. Free exhibition.

## Large Ceramic Bird sculpting

Sun 9 October  
Time: 10:00am - 4:00pm  
64 Platts Road  
Cost: \$120  
Bookings required:  
Jessie 5626 7045  
Create a large ceramic  
bird to be mounted in your  
garden. You will learn how  
to use armature, create  
textures and patterns and  
hollow the bird out ready  
for firing. All materials,  
tools and firing provided.

## Linocut Printing Workshop

Thurs 6 October  
10am-3.30pm  
Yarragon Public Hall,  
Cost: \$85  
Bookings: Tritec 5634 2044  
Create a small edition  
of prints with Helen  
Timbury. Using the  
reduction technique a  
colourful print is made  
from a single block. With  
progressive cutting,  
and inking the image  
emerges.

## Origami Flowers workshop

Sat 8 October  
1:00 - 3:00pm  
Trafalgar Railway Station  
Artspace 1  
Cost: \$10  
Bookings: Marlene  
Ogden 5634 2790  
Learn to make a simple  
origami flower. Great to  
decorate your home for  
Christmas.

## Tree Walks of Drouin

12, 20 & 28 October  
Free event  
Bookings: thegables@dcsi.net.au  
Or heyfieldwares@wideband.net.au  
Judy 5625 1972 or Peter 5625 9412  
Three guided walks showcasing some  
of Drouin's trees, wetlands and open  
spaces. Learn why urban trees are  
valuable. Moderate fitness required.

## Summerhill Wetlands

Wed 12 October, 1pm - 3pm  
Meet at Bellbird Park Indoor Centre  
car park, Settlement Rd.

## Drouin Township:

Thur 20 October, 11am - 1pm  
Meet Drouin Railway Station car park.

## McNeilly Wetlands

Fri 28 October, 9am - 11am  
Meet at wetlands in Jackson's Drive.

Celebrate your Arts Centre with  
**Kate Ceberano & Paul Grabowsky**  
'Love Songs'

An intimate evening with multiple  
Australian award-winner, Kate Ceberano  
and her musical partner, Paul Grabowsky.

This very personal journey into  
words and music by two of Australia's  
most respected musicians sees  
reinterpretations of some of the great  
love songs of the past 50 years.

**West Gippsland Arts Centre**  
Wednesday 23 November 8:00pm  
Bookings: [www.wgac.com.au](http://www.wgac.com.au) - 5624 2456



WEST GIPPSLAND ARTS CENTRE WARRAGUL



Botanical theme Workshop



Sculpture in the Street



Palatable Petals



Introduction to Hydroponics



## Botanical theme workshops

Thurs 13, 20 & 27 Oct  
Time: 10:30am - 12:30pm  
The Station Gallery  
Yarragon Railway Station  
Cost: \$120  
Bookings required:  
Phone: Lucy 0400 135 177  
A series of three  
instructive workshops  
with artist Lucy Chapman.  
Drawing, tonal study, and  
all aspects of developing  
a complete painting in  
watercolour.

## Warragul Farmers' Market

Sat 15 October  
8:30am - 1:00pm  
Civic Park, Warragul  
Phone: 0425 259 177  
Situated in beautiful Civic  
Park, a celebration of  
local produce and artisan  
made food. With over  
50 stalls, live music and  
plenty to eat and drink.  
Arts market is adjacent.

## Sculpture in the Street

14 Oct - 6 Nov  
Neerim South  
acquisition@neerimbower.  
com.au  
Free event  
Sculptures reflecting the  
theme of "Inspired by  
Birds", the 2016 Neerim  
District Community Bank  
Art Prize - Neerim Bower  
Acquisition will be on  
show in various positions  
along the main street of  
Neerim South.

## Warragul Arts Market

Sat 15 October,  
9:00am - 1:00pm  
Civic Park, Warragul  
Phone: 5626 7045  
Our 5th birthday market  
with artist run stalls:  
painters, potters,  
sculptors, printmakers.  
Art demos, live music  
and a Gardivalia themed  
activity.

## Bush Tucker Garden Official Opening

Mon 17 October  
10:00am - 12:00pm  
Warragul Community Kindergarten  
1 Mouitz Street, Warragul  
Phone: 5626 7045  
Free event  
This delightful garden  
designed by Prue Metcalf  
was built and planted  
over the last 12 months.  
Includes garden art made  
by the children, face  
painting, baby animal farm  
and more.

## Palatable Petals

Sat/Sun 15 & 16, 22 & 23 Oct  
9:00am - 5:00pm  
Red Parrot Cafe, Noojee  
Phone: 5628 9602  
Cost \$12.00  
Devonshire Tea/Coffee  
featuring a taste from  
the garden gate! Special  
treats include rhubarb  
muffins, rose & strawberry  
cupcakes and lavender  
scones.

## Introduction to Hydroponics

Friday 14 October  
10:30am - 12:00pm  
Community College Gippsland  
71 Warragul-Korumburra Rd,  
Warragul  
Cost: \$15 per person  
Bookings required: [rsvp@ccg.asn.au](mailto:rsvp@ccg.asn.au)  
Phone: 0417 388 296

Visit our working farm and see  
hydroponics in action in our fantastic  
hot-house facilities. During this  
workshop our expert trainers will  
teach you: how the hydroponic  
system works, the nature of plants  
and how they grow, using nutrients in  
a hydroponic system, and planning a  
basic hydroponic food production for  
the home system.



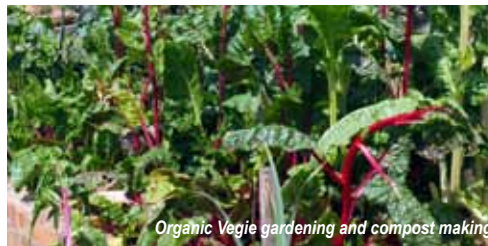
Community  
College  
Gippsland



## Learn Experience Achieve

P 5622 6000  
[info@ccg.asn.au](mailto:info@ccg.asn.au)  
[www.ccg.asn.au](http://www.ccg.asn.au)





## The Art of Bonsai workshop

Saturday 22 October

10:00am - 3:00pm

Drouin Library, Princes Way, Drouin

Contact: Meredith 0439 295 086

Cost: gold coin donation

West Gippsland Bonsai Group present workshop on shape, colour and form.

Tree displays and plant sales. See public bonsai display during library hours 14 - 22 October.

## Neerim Bower Arts Festival

Sun 23 October

11:00 - 4:00pm

Neerim South Recreation Reserve

Neerim South

Phone Mark 0411 199 199

Cost: Free

Music, food, plant, craft and art stalls.

Children's activities, QSW Neerim

Schools Art Exhibition and Community Art Exhibition & prize.

## Organic Vegie Gardening & Compost Making Demonstration

Sat 15 October

10:30am and 12noon

Rowe's Nursery

105 Landsborough Road,

Warragul

Free sessions

Bookings preferred: 5622 2223

Steve's demonstration will cover how to make compost in just two weeks, tips on growing vegies from seed, how to get better results from your vegie garden and the use of organic fertilizers such as sheep manure which is just one of the many fertilizers available at the nursery. There will be specials on vegie seedlings on the day. Email: rowesnursery@dcsi.net.au



9AM-4PM  
8 & 9 October  
Lardner Park  
Warragul

OVER 150  
GREAT  
EXHIBITS

Gippsland  
**GARDEN  
& HOME  
EXPO**



[www.drouinlions.org.au/gardenexpo](http://www.drouinlions.org.au/gardenexpo)

**ROWE'S** TOP QUALITY PLANTS  
**NURSERY** AT LOW PRICES  
We grow our own plants  
to save you money

- Perennials
- Ground covers
- Trees
- Cottage plants
- Pittosporums
- English Box
- Herbs
- Camellias
- Seedlings
- Grasses
- Gardenias
- Hedge Plants
- Purple Flax
- Mondo Grass
- Daphne
- Shrubs
- Proteas
- Natives

**ORGANIC  
FERTILIZER**  
available including  
**SHEEP  
MANURE**

*Proud sponsors of Gardivalia*

105 LANDSBOROUGH ROAD, WARRAGUL, PH 5622 2223

OPEN 7 DAYS 9-5 MON-SAT, 10-4 SUN



Labyrinth Workshop



Eastern Park Community Garden



Flourish Exhibition

### Events at Coromandel Arboretum

426 East West Road,  
Warragul  
Jan 0408 318 429  
Cost: garden entry

### Labyrinth Workshop

Sat 22 Oct  
2:00 - 4:00pm  
Bookings by Oct 21  
Christina Rowntree,  
renowned accredited  
Veriditas labyrinth  
facilitator, will facilitate  
walkers' experiences of  
the labyrinth for personal  
transformation.

### Peace and Mandala Workshop

Sun 23 Oct  
2:00 - 3:00pm  
Bookings by Oct 21  
Relax your spirit using  
this Japanese method  
of peace meditation and  
create your own mandala.

### Music in the Park

Sat 22 & Sun 23 Oct  
12:00 - 2:00pm  
Listen to the music  
of Alan Tatlow. BYO  
picnic or CWA lunch or  
devonshire tea.

### Shed Collection of Vintage Garden & Farm Tools

Sat 22 & Sun 23 Oct  
10:00 - 4:00pm  
Historic collection of  
saws, scythes, milk cans,  
kettles, irons, milking  
equipment, plough and  
lots of old metal things, at  
the back of the garden.  
For display and sale.

### Flourish exhibition

24 Oct - 18 Nov  
West Gippsland Arts Centre  
Cnr Smith and Albert streets, Warragul  
Open Mon-Fri 9:00am-5:00pm  
Reflecting the flourishing arts scene in West  
Gippsland, the Baw Baw Arts Alliance presents this  
exquisite exhibition of members' work. Free entry.

### Eastern Park Community Garden Spring Festival

Sunday 23 October  
10:00am - 4:00pm  
Off Cambridge Drive  
Warragul  
Info: Donna 0407 873 681  
Free event  
A Spring Festival to  
celebrate the garden's  
second birthday; plants for  
sale, free kids activities,  
live music, demonstrations  
and workshops, market  
stalls, food and fun.  
Take a guided tour, huge  
variety of plants, enjoy the  
beautiful park surrounds.



## Proudly supporting the 2016 Gardivalia Festival of Gardens.

Banking products and personal service that help make  
communities bigger.

**Drop into your nearest branch at 143 – 145 Main Neerim  
Road, Neerim South or phone 5628 1079 to find out more.**



**Bendigo Bank**

Bigger than a bank.

[bendigobank.com.au](http://bendigobank.com.au)

Bendigo and Adelaide Bank Limited, ABN 11 068 049 178 AFSL/Australian Credit  
Licence 237879. S48450-1 (302535\_v1) (12/05/2016)



# gardivalia.com.au



Follow us on Facebook

Contact Us

Vicky Keane: 5627 5621

Maree Wallace: 0427 046 805

Email: [info@gardivalia.com.au](mailto:info@gardivalia.com.au)

*Celebrating  
10 years of  
beautiful  
gardens*



Proud sponsors

